

Working Together to Extend your Child's Learning at Home

As we work in partnership with parents/carers we ask that you continue to enhance your child's learning and development at home over the coming weeks through sharing and exploring with some or all of the following activities which you can enjoy together:

Items added to YouTube -

[Auntie Rachel meets Lola the Listening Leopard](#)

[Auntie Jen reads Rosie's Walk](#)

Activities to do:

- ☀️ Read your child the Rosie's Walk story or follow the above link to see Auntie Jen reading the story.
- ☀️ Show your child pictures of maps attached below. Select a large piece of paper and pens and take inspiration from your child's ideas to help them to draw a map - it could be of the park, or a walk that they've been on. Talk to them about the route that they would take to get to a place, noting the landmarks that they would see on the way.
- ☀️ Help your child to create their map, using maybe train or Happy Street track or even just blocks.



- ☀️ Help your child to create a large obstacle course outdoors using anything that you can find for them to climb over, crawl under or through or that they can use as stepping-stones. As they move across the equipment, talk to them about the route that they are taking.



- ☀️ Give your child a large potato, sliced in half length ways. Give them some cocktail sticks and encourage them to use their fine motor skills to push the sticks into the potato to create a hedgehog - they can even draw a face on it!



- ☀️ Follow the below link to a 60 Minute Nursery Rhyme Medley. Sing along and encourage your child to join in with the songs - including actions if there are any!

[60 Minute Nursery Rhyme Medley](#)

- ☀️ Play alongside your child at an activity of their own choosing. As they play use the commenting approach (see below link) to give a running commentary of what they are doing. Continue to try to carry out the commenting approach with your child for approximately 10 minutes daily.

[An introduction to using the commenting approach with your child](#)



- Car Park
- Disabled Car Park
- First Aid
- Lost Children
- Customer Services
- Disabled Toilets
- Toilets
- Changing Places
- Baby Changing
- Hand Wash Facilities
- Ice Cream Kiosk
- Picnic Area
- Catering
- 'Ow bin ya' Sands Beach
- Funfair
- Play Area
- Safari Gift Shop
- Train Stop
- The Oak Kitchen at the Queen Mary
- Castle Courtyard
- Chairlift

- Steps
- Path unsuitable for pushchairs, scooters and wheelchair users
- Ramp / Adverse camber
- Suggested route for pushchairs, scooters and wheelchair users

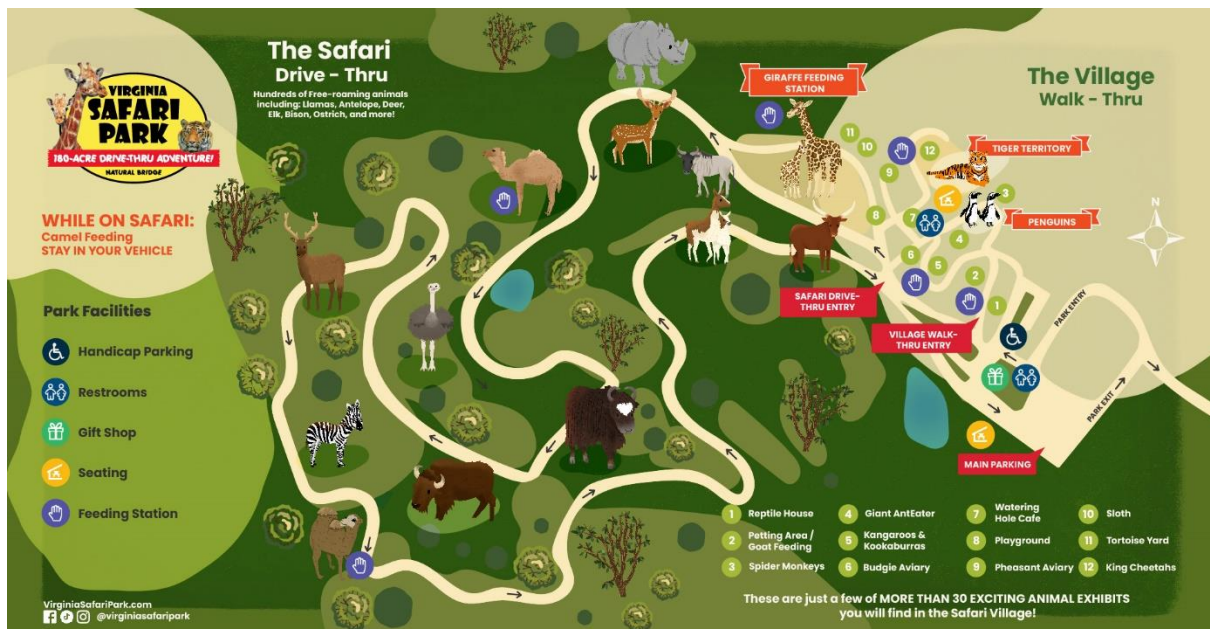
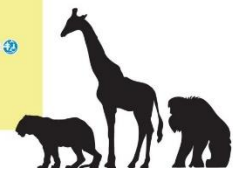
During your visit...

- Please **DO NOT** feed the animals.
- No cycling, rollerblades or scooters.
- Children must be accompanied by a responsible adult at all times.
- Please ensure you wash your hands after contact with any animal.
- It is the responsibility of parents/guardians to ensure children within their charge understand the instructions given on the land train and chairlift by DZC staff.
- DO NOT** go beyond barriers, climb or stand on walls or enclosures.
- Remember you are looking into an animal's home so **PLEASE DO NOT** bang on the glass.
- You can ask for a pass to return to your vehicle.
- Nectar sales will stop an hour before Lorikeet Lookout closing time.

GROUND'S CLOSE AT 5.30PM

- | | | | | |
|------------------------------|--------------------|-------------------------------|-----------------------------------|---------------------|
| 1 Flamingo Falls | 11 Sumatran Tigers | 21 Cassowary Paddock | 31 Painted Dogs (coming soon) | 41 Monkeys |
| 2 Colombian Spider Monkeys | 12 Bush Dogs | 22 Aviaries | 32 Castle play area | 42 Black Lemurs |
| 3 Tortoise Terrain | 13 Lynx | 23 Barbary Sheep | 33 Meerkats | 43 Chimpanzees |
| 4 Geladas | 14 Red Pandas | 24 Skots | 34 Reptile World | 44 Howler Monkeys |
| 5 Great Grey Owl / Snowy Owl | 15 Giraffes | 25 Otters | 35 The Great Crested Newt Project | 45 Lorikeet Lookout |
| 6 Small Owls | 16 Capybaras | 26 Parrot Aviaries | 36 Gibbons | 46 Reindeer |
| 7 Kookaburras | 17 Tapirs | 27 Lemur Wood | 37 Sea Lions | 47 Farm Barn |
| 8 Wolverine/Armadillos | 18 Binturongs | 28 Asiatic Lions | 38 Bird Aviary | 48 Camels |
| 9 Arctic Fox | 19 Anteaters | 29 Orangutans | 39 Waterfowl | 49 Geladas |
| 10 Snow Leopard Heights | 20 Parma Wallabies | 30 Painted Dogs (coming soon) | 40 Penguins | |

Details are correct at time of going to press. We reserve the right to close parts of the Zoo and Castle as necessary. Please call prior to visiting. Dudley Zoo and Castle cannot be held responsible for any virus, subsequent alterations or inaccuracies arising therefrom. MAPREF/0000000



The Safari Drive - Thru

Hundreds of free-roaming animals including: Lions, Antelope, Deer, Elk, Bison, Ostrich, and more!

WHILE ON SAFARI:
Camel Feeding
STAY IN YOUR VEHICLE

Park Facilities

- Handicap Parking
- Restrooms
- Gift Shop
- Seating
- Feeding Station

VirginiaSafariPark.com
@virginiasafaripark

These are just a few of **MORE THAN 30** EXCITING ANIMAL EXHIBITS you will find in the Safari Village!

Below are some useful links that you may wish to browse to find other ideas for activities!

- ❖ [Better Health Start for Life - tips on helping your child to talk](#)
 - ❖ [Activities for babies, toddlers and children - BBC Tiny Happy People](#)
 - ❖ [Family Zone | National Literacy Trust](#)
 - ❖ [Black Country Early Outcomes | Activities for under 5s](#)
- [Activities for kids: Fun development and bonding ideas for babies, toddlers and pre-school children](#)