

# Welcome to Bethel Chapel

Report 2023





# Statement of Faith for The Church That Meets at Bethel

- We believe in the Divine inspiration of the Bible, the Word of God, and its authority in matters of faith and conduct.
- We believe in the Trinity – the unity and individuality of the Father, Son and Holy Spirit in God.
- We believe in the Divinity of Jesus Christ, His incarnation and virgin birth, His real and sinless humanity, His atoning sacrifice for our sins, His resurrection and ascension and in His return.
- We believe in the inherent broken relationship between man and God brought about through the disobedience of man, the only way to restore the broken relationship being through Jesus.
- We believe in the indwelling of the Holy Spirit, in the necessity of the fruits of the Spirit as a witness to a life lived for God, and in the gifts of the Spirit as beneficial to the work and growth of the Church.
- We believe in the final judgement by God following death according to our faith in Christ here on earth, and eternal life with God in heaven, and in Hell – eternal life without God.
- We believe in the local Church as a fellowship and family belonging to God and each other, designed to worship God, teach His Word, preach the Gospel of Salvation, for the encouragement and building up of the members.
- The vision of this Church is that we should be a serving community dedicated to taking the Gospel of Christ to the surrounding area, to be faithful servants of God and wise stewards of His world and provisions.

# The Trustees

&

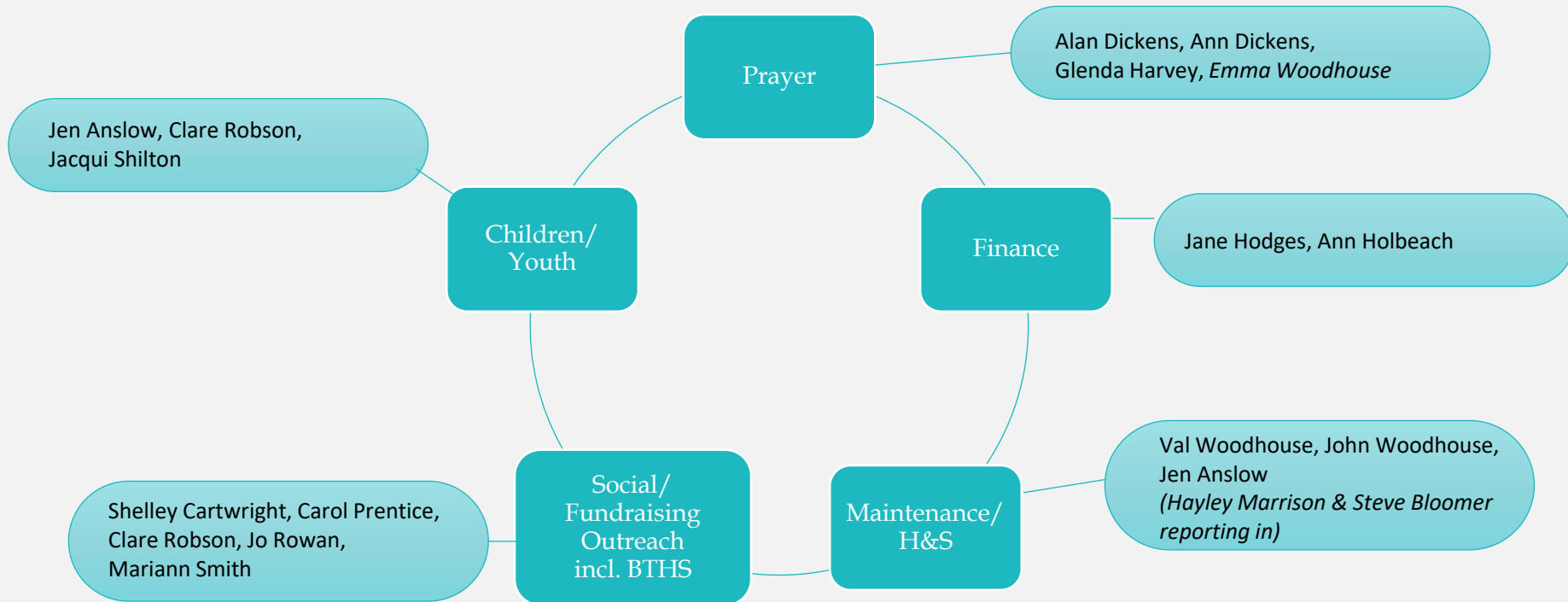
# TEAM

- Jonathan Wilding (*Chair*)
- Jen Anslow (*representing Little Lambs Pre-School*)
- Jill Berry (*Pastor*)
- Glenda Harvey
- Pat Hazlehurst
- Jane Hodges
- Andy Parkes
- Sarah Parkes
- Jo Rowan
- Jacqui Shilton

## The Trustees plus

- Shelley Cartwright
- Alan Dickens
- Ann Dickens
- Ann Holbeach
- Carol Prentice
- Clare Robson
- Mariann Smith
- Emma Woodhouse
- Val Woodhouse
- John Woodhouse

# TEAM has 5 'Cell Groups'



Cell groups report back to TEAM meetings and also draw on representatives from the wider church

# Staff – Bethel currently employs 18 staff between Church and Little Lambs

- Jane Hodges (Office Manager)
- Hayley Marrison (Health & Safety/Admin)
- Steve Bloomer (Caretaker)
- Steve Hawker (Maintenance)
- Jackie Busby (Church Cleaner)
- Nikki Harper (Church Assistant & Pre-School Cleaner)
- Sami Nordhoff (Little Acorns Toddler Group Leader)
  - Jen Anslow (Pre-School Manager)
  - Rachel Gibbon (Deputy Pre-School Manager)
  - Maureen Leonard (Pre-School Senior Key Person)
  - Lucy Watkins (Pre-School Senior Key Person)
  - Clare Robson (Pre-School Senior Key Person/Admin)
  - Emma Keeling (Pre-School HR/Admin)
  - Janine Plews-McVittie (Pre-School Key Person)
  - Tammy Jones (Pre-School Key Person)
  - Fiona Heath (Pre-School Assistant)
  - Aeysha Iftahar (Pre-School Assistant)
  - Kristy Darby (Pre-School Assistant)

# Volunteers

Pastor Jill Berry has given her services to Bethel on a voluntary basis since January 2023

As well as this, and the staff employed by Bethel, there is a whole army of volunteers who give their time and love in many areas, including our current outreach groups:

- PathFinders & PathBreakers (*Sundays, 10.30am, 0-14 years*)
- IceBreakers & (*Sundays, 10.30am, 15-18 years*)
- Knit & Natter (*Mondays, 9.30am*)
- BIBO (*Breathe in Breathe Out*) (*Mondays, 1.00pm*)
- Cornerstone (*Wednesdays, 12.30pm, senior citizens (bids!)*)
- Little Acorns Toddler Group (*Thursdays, 9.30am, 0-5 years*)
- Prayer Group (*Thursdays, 4.00pm*)
- Feel Good Fridays (*Fridays, 2.00pm*)
- Friday Night IceBreakers (*Fridays, 7.00pm, 11-18 years*)
- Cancer Peer Support Group (*Last Tuesday of the month, 5.30pm*)
- One Way Club (*Saturdays once a month, 10.00am, 5-14 years*)

# Volunteering

We also have many other areas in which people volunteer on a rota basis, such as

- Door Welcome – welcoming people as they arrive at the door on Sunday mornings – an important job as they give the first impression of Bethel to people coming through the doors for the first time.
- Flower arranging – making sure there are flowers in church each week (*no experience needed, if you can put flowers in a vase this could be you!*) Taking pride in the appearance of God's house.
- Refreshments – tea/coffee/squash making & serving from the kitchen at the start of the Sunday morning service, starting our act of worship by fellowshiping with each other.
- Vacc'ing – vacuuming the carpet in church after the service on a Sunday morning so that it is ready for the evening service, another chance to serve God through keeping His house looking loved.

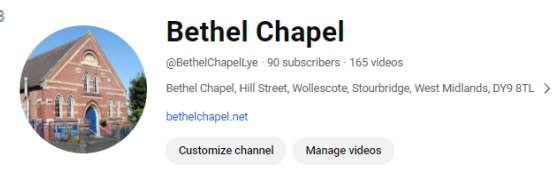
*Pre-Covid, we had over 50 different people volunteering for the church rotas, now we are have less than 20 people doing them! Please consider whether you can serve God by performing some of these essential roles in church.*

Also

- Bethel Treasures Heaven Scent – Working in our Charity Shop in Quarry Bank High Street (*open Tuesdays, Wednesdays, Fridays and Saturdays*) spreading God's love throughout the community.
- Christmas and Summer Fayres, plus other social, outreach and fundraising events which are held through the year, helping to raise funds so we can continue to be a light in the darkness.

*New volunteers are always welcome, please let someone know if you would like to volunteer in any area of our church family life.*

*Everyone has different jobs, roles, giftings and callings and all are equally valuable*



# Sunday Services – including YouTube Streaming

We have two services each Sunday:

- Mornings at 10.30am
- Evenings at 6.00pm

The morning includes worship songs lead by the band, and also includes our young people's PathFinders, PathBreakers and IceBreakers sessions. The service begins as soon as you enter the Chapel, with tea, coffee, cold drinks and fellowship right from the start. We usually 'drift' into the worship/singing part of the service which usually lasts about 90 minutes. However, we have a lovely saying, "Come when you can, leave when you must", so you're never late! We welcome children, teenagers, our precious old bids and everyone in between, and we are delighted to include Roxy, our regular dog attender – she loves people and will make you very welcome.

The evening service includes hymns usually played on the organ. Evening service lasts about an hour, with hymns, prayers, a Bible reading and a message on the Bible reading. It's a more traditional service than the mornings – a lovely quiet, evening hour of worship and prayer and God's word.

Pastor Jill usually leads these services, but we also have some services lead by others from our church, such as Alan Dickens, Glenda Harvey, Nigel Cook, Andy Nicholls, June Winnall, Jo Chance, etc.

Following on from us having to use Zoom for our services during the Covid lockdown, we put into place the cameras to allow us to use YouTube to run our services live and on 'catch-up' for those who can't make it to church. Our YouTube channel is at [www.youtube.com/@BethelChapelLye](https://www.youtube.com/@BethelChapelLye). This facility has proven very popular, and the amount of 'watches' is sometimes more than the people who were actually in the service! Please subscribe to our channel and if you like the service, give it a thumbs up!

Everyone is very welcome to either/both services, from quite traditional evenings to more random, easy-going style mornings – whichever helps you in your Christian faith – come and see.



# PathFinders & PathBreakers



This is our Sunday morning time of fun and teaching for the children within Bethel - from Pre-school to Year 9.

Our aim in Pathfinders is for all our children to feel loved, safe and special so that they are able to open their hearts and minds to God - and feel that they are valuable members of the church that meets at Bethel.

First of all, after we leave the main service on Sunday mornings we join together for “news and chat” about our week and anything that is concerning us.

From 2024 we have started to then split into 2 groups, the older ones, PathBreakers, are school years 6 – 9 (around 10 – 14 years old) and PathFinders are the younger ones, years 5 and under (up to 10 years old). PathBreakers is staffed by Jacqui & Jorja, and PathFinders by Jane & Clare, along with help from some of the moms/nans of the little ones.

PathBreakers now is a little more discussion based and thought provoking for the older end of the group. They still have time for games, videos, etc. based on the theme of the week, but more aimed at their age range, and it is preparing them for the time when they will graduate on to IceBreakers.

PathFinders still has lots of the usual crafts, colouring, wordsearches, etc. as well as a video on the theme of each week, and for the really little ones, a time to play. We always try to finish off with a little prayer related to whatever we have been talking about that week.

We aim to get back together for around 12.00pm so that we can chat with each other about what we’ve been doing during the morning – we use the same theme but approach it age-appropriately.

As the service in church finishes at different times each week, we keep an eye on the YouTube streaming of the service next door so that we know when to come back into church – isn’t technology wonderful?!

We are very proud of our PathFinders and PathBreakers, they are maturing into delightful young people with lovely hearts. We appreciate your continuing prayers for all our children and young people who are such a vital part of the Church that meets at Bethel.

# Icebreakers / Friday Night Icebreakers



## **ICEBREAKERS**

Here at Bethel we have our own 'Icebreakers' who are a group of school year 10 and overs who meet each Sunday morning while the 'preachy part' is taking place in the Chapel.

We meet in the area just outside the kitchen, which becomes our 'space' for about an hour each week and we use the time to chat about life, share news and info, catch up with friends who we haven't seen for a few days and generally just have a good 'get together'. Once we've chatted about something that we think is great or concerns us, we take a subject and try to look at it from the viewpoint of being a Christian. The stuff we talk through and the subjects we cover are so wide ranging that it's difficult to put them all into one 'box' but the sessions are lively, often controversial and regularly go off into areas that we didn't think about at the start.

## **FRIDAY NIGHT ICEBREAKERS**

On Fridays we have chilled out evenings for those aged from school year 7 in the back rooms, lawn and church areas. Between 7.00-9.00pm during term-time, we get together with our friends to have a fun evening, with cooking, pool, badminton in church, music, etc. to keep us entertained.

Icebreakers is hopefully a place where young people can feel safe and valued and learn a little bit more about being alive and being a Christian in the 21st Century.



# Little Lambs Pre-School Centre

Little Lambs Pre-School Centre is a 55-place private Pre-School operating in a purpose-built Early Years Centre in Bethel Chapel. The centre includes 3 main rooms and a large outdoor play area, with lawns, paved areas, a soft surface play area and outdoor classroom.

The setting is on one level with its own private drive and access to the main entrance can be made via a ramp or steps. The whole building has been designed for inclusion of all children and parents with any disability.

Children come from the local and wider community and transfer up to eighteen different local schools.

The setting operates 5 days a week, term times only. Sessions are 8.30 until 11.30am for children the year before they start school and 12.30 until 3.30pm for younger children (excluding Friday afternoons). Sessions for 2½ year olds remain at 2½ hours until the child is old enough to access Early Education Funding. These sessions are 12.30-3.00pm Monday, Tuesday, Wednesday and Thursday. We offer a limited number of 30-hour places for morning children. Sessions are 8.30am–3.30pm Monday – Thursday and 8.30am–11.30am on Fridays

Our setting ethos is **'Explore, Experience, Enjoy'**

*Eleven full-time and part-time staff work with the children. One staff member has qualified teacher status, nine staff members hold a level 3 qualification in Childcare, and one staff member is office based and holds a NVQ level 3 qualification in administration.*

Little Lambs sets out an inclusive approach, designed to be responsive to the individual needs of children and parents. We focus on delivering improved outcomes for all children and closing the achievement gap between disadvantaged children and others. Our setting aims to be inclusive to all children. We are familiar with and work within the boundaries of the Disabled Children & the Equality Act 2010.

We welcome parents, children and staff with disabilities since our early years rooms are designed to accommodate such needs. There are ramps both at the entrance to the building and to our outside play area and the rooms are all on one level. There is a separate toilet facility for people with disabilities with wide doors for wheelchair access. There is a quiet room within our setting for private discussion with parents, outside agencies or working on a 1 to 1 with children.

Little Lambs was last inspected by OFSTED in June 2022, which can be seen here - <https://reports.ofsted.gov.uk/provider/16/EY225918>

The welfare of the child is of paramount importance. Little Lambs is committed to safeguarding and promoting the welfare of children and expects all staff, volunteers and parents to share this commitment. Here at Little Lambs, we take safeguarding very seriously.

We believe children are a gift from God, and we count it a privilege to look after the children whose parents choose Little Lambs for their child's Pre-School education.



# Knit & Natter

Every Monday morning at 9.30am, Bethel is open to Knit and Natter. A small group of ladies who come together to share a cuppa, a chat and a shared love of crafting.

Although the group is called Knit and Natter you will also find crocheting, needlepoint and occasionally other crafty things going on, but one thing for sure, nattering is always the main star of the morning!!

Knit and Natter have always loved a project and its members have been part of many things over the years including knitting hundreds of poppies for Bethel's remembrance displays, tiny hats for the Innocent Big Knit Challenge, coats for Greyhound Rescue and small hats and blankets for premature babies at Russells Hall Hospital. The current members are still just as generous knitting teddies for charity, knitting and crocheting baby clothing for Bethel Treasures charity shop and the local Baby Bank and one lady knitting toys for her Grandson's special school, and of course, the Christmas Fayre always benefits from a beautiful selection of well-crafted handmade items for our Winter Warmers and Christmas Gifts stalls.

The group was started in 2015 by Sue Wilding with people from Bethel and over the years has reached out and welcomed people from the local community. So, whether you are a master crafter or complete novice, as long as you can natter, you are welcome too!!

# BIBO – Breathe In Breathe Out



We are BIBO (Breathe In Breathe Out)

We meet up every Monday between 1.00 - 3.00pm at Bethel around the table outside the kitchen.

We are a self-help group for people who have problems with breathing issues, such as COPD, lung disease, asthma, etc. and we meet up socially each week.

Some weeks we do crafts, e.g. card making and jewellery making.

We also go out for meals to celebrate birthdays, Easter, Christmas, etc.

At the weekly sessions we share a cuppa and cakes, and we help each other if any of us have any problems.

We can share our experience of dealing with the health issues we each have and talk about the practicalities of coping with health services and systems.

The only problem is the sessions go so quickly - we never seem to have enough time!

Our group is small but slowly growing and everyone is welcome to come along.

# Cornerstone



Cornerstone lunch club for the elderly - started back in 1992 and is still going from strength to strength!

With eager members (affectionately known as bids) and staff, Cornerstone changed a lot after Covid, we lost many of precious bids, some had just become too ill or frail to come back once we re-opened and sadly, some had passed away, but as old friends were lost, many new friends were waiting to join our happy family.

We have Lynda still at the helm cooking mouth-watering and nutritious meals, Hayley in the thick of it co-ordinating everything, an amazing team of volunteers, serving, clearing, and washing-up, minibus drivers and mates safely bringing people in then taking them home and Jill providing a short service with prayers and hymns to feed the soul - Wednesdays at Bethel are filled with the sound of joy and laughter.

This wonderful club that was started so many years ago continues to grow and thrive, offering people a place to come together for good food and friendship, to share joys and sometimes sadness, to laugh and sing, but mainly to complain that Hayley never picks the right winning number on the Bonus Ball Raffle or moan when she forgets the Turkish Delight for the chocolate box!!!

We've shared jokes, stories and poems written by our very own Win Parker and even a mystery – The case of the missing walking sticks which is still unsolved today!!! You never know what a Wednesday at Cornerstone will hold, but you can guarantee it will always put a smile on your face!!!

In recent times our bids have been treated to some special events including an afternoon tea for our beloved Queen Elizabeth II's Platinum Jubilee, a little over a year later were the Coronation Celebrations, a wonderful show from Maggie O'Hara, Christmas Parties with special visits from Santa and an Afternoon Tea during the summer break when we usually don't get to see each other. We've celebrated special birthdays and always try to make a fuss of our bids on special days through the year including Valentines Day, Mother's Day and Easter to name but a few.

Every Wednesday that we can be together is a blessing and our wonderful volunteers (most of whom should be sitting and having a lunch instead of serving it) work tirelessly week after week to make every week as enjoyable as possible. Cornerstone wouldn't be what it is without these good and faithful servants.

New volunteers are always welcome, whether that is to help in the kitchen, serving, washing up or tidying away afterwards, please ask if you would like to know more about volunteering opportunities with Cornerstone.

May God bless every member of Cornerstone, bid or volunteer, and long may this special club continue.

# Little Acorns Toddler Group



Little Acorns Parent/Carer & Toddler Group usually meets at Bethel on Thursday mornings during term time from 9.30 until 11.15am, running alongside Little Lambs Pre-School Centre. It is open to any child under school age, and they come with a grown up, this may be Mom, Dad, Nanny or Childminder, whoever is around.

There are lots of different toys to play with and friendly people for everyone to chat to. Towards the end of the session, they tidy the toys away and have drinks with various snacks. Then when everyone has finished, they sit for circle time. This varies every week from song time, stories and dancing.

At the end of last year, Di Woodward, who had been running the group for a couple of years, left and we now have a new Toddler Group leader, Sami Nordhoff. Sami is fully qualified to work with young children.

Please pray for all the children we come into contact with and the families they represent.

# Prayer Group



Prayer is central to our Christian life and our relationship with God as shown by Jesus Himself in spending time regularly in prayer.

In the Bible we are all encouraged to pray, both in the teachings of Jesus and in the writings of Paul.

There is prayer in every Church service, and on the various WhatsApp groups the Lord's prayer is shared daily.

In addition, there is in Church on Thursday afternoon in most weeks a 4pm Prayer Meeting where a (currently) small group prays into all aspects of Bethel plus many other local, national and international matters.

There is a prayer box on the table in the prayer area into which everyone is encouraged to contribute an item for prayer, and the group take them out and pray over them. There is no need to include the originator's name.

Anyone is welcome to come along and join in the prayer group any week they are able to.



# Feel Good Friday



Feel Good Friday has been going for around a year now on Friday afternoons at Bethel.

It is open to everyone, but at present there are around 5 or 6 ladies, occasionally joined by others, who get together to have a chat, play a game of dominoes, have a cuppa and a biscuit and spend a lovely time together from 2pm for a couple of hours in the warm.

Other activities are available, or you can bring your own, and the Wi-Fi is always there to use.

There are also special celebrations such as birthdays and Christmas, when we try to push the boat out a little and have a party with special cakes and candles.

A warm welcome is extended to everyone - come along and join in with the dominos, there's usually so much chatting no one can remember who is due to have the next turn!

# One Way Club



Matthew 19:14 says “Jesus said ‘let the little children come to me and do not hinder them because the kingdom of heaven belongs to such as these’ ”

At One Way Youth Club, we truly believe this, and we strive to encourage children to believe in themselves and their own abilities so they can aspire to be the best they can be.

Each session the children have opportunities to share any exciting news, birthdays or any worries or concerns that they have and to ask for prayers for their families and friends. We hope that through the kindness, love and understanding that we have for the children, we will show them the love of Jesus and help them to see how special they are in God’s eyes –each a unique child of God.

Since starting the new monthly Saturday One Way Club, we have had an amazing group of children join us who love to take part in the fun activities and games that we usually plan around a chosen theme.

We dance, sing and play and always finish with Lord’s Prayer. It is so wonderful to see our young ones engaged in what is on offer, playing together, helping each other, and filling the room with joy and laughter.

# Cancer Peer Support Group & Cancer Research UK



## Cancer Peer Support Group

Cancer will affect 1 in 2 of us during our lifetime, and everyone will know someone who has been/is affected by cancer. Here at Bethel, we have experienced more than our fair share of it.

So, we thought it might be useful to start a peer support group, for people who are going through, have had, think they have, or have loved ones who have or had cancer at any time. Supporting each other through all the symptoms, worries, thoughts and fears is an invaluable resource.

The group started to meet early in 2023, and now get together on the last Tuesday of each month at around 5.30pm until around 7.00pm-ish – we all know the fatigue that comes after cancer, so we can be home early!

It is nothing too heavy, just a time to be able to chat to people who know what you're going through, or just sit and listen, whatever is most helpful for you.

Some of us have found the most disconcerting time in our cancer journeys (after diagnosis) has been the time immediately following first-line treatment finishing, when all the support and contact from the medical professionals seems to come to an abrupt end. Peer support can then be invaluable.

Jane Hodges has also recently trained to be a Cancer Ambassador and is currently doing the Cancer Community Champion training, so if anyone wants to chat about anything cancer related, catch her on a Sunday or drop in/ring the office during the week.

## Cancer Research UK



Cancer Research UK has a home here at Bethel - it began more than 45 years ago with Jim Dickens, who was part of the initial Cancer Research UK Dudley and District Committee.

As the numbers fell away one by one, Jim asked Jill to join, but then it ended up with just the two of them! As days turned to years, Jim needed a bit more help with the banking, so Jill's sister Joyce stepped in. After Jim's promotion to glory, Jill and Joyce did the Cancer Research in memory of their dad, Les, who died over 30 years ago of this horrid disease.

More recently Joyce and Jill have passed on the baton for the administration of these funds onto Jane Hart and Clare Jenson, who are also part of the Cancer Peer Support Group, and this is helping Clare to deal with losing her husband, Jim, to cancer.

# Bethel Treasures Heaven Scent

Bethel Treasures - Heaven Scent is now a firmly established feature of Quarry Bank High Street. Our vintage themed shop boasts a mixture of lovely pre-owned and new items, the collection includes clothes, accessories, children's and household items as well as an extensive range of bric-a-brac at affordable prices. Customers comment on the peaceful atmosphere and the lovely perfume of fresh flowers, which combine to make it unlike any other shop.

A shoppers car park is located to the rear of the shop which makes visiting convenient for customers whether they travel by car, bus or on foot.

The shop is open Tuesdays 10am - 2pm, Wednesdays & Fridays 11am - 3pm and Saturdays 10am - 1pm, and all donations are taken at Bethel during office hours. We have a storage unit which holds the stock until it is needed in the shop, with Steve Hawker running items between all the locations in the Bethel van.

Many customers call it their 'Little shop of Hope' and feel that if they come in weighed down by the anxieties of this world, they can bank on going back out laughing - and hopefully with a bargain as well.

It has established itself as a firm part of the local community with many of the local shop workers popping in and being prepared to lend a hand if there are deliveries of heavy items.

It works on lots of different levels - providing a cup of tea, a listening ear and filling a need when people want something specific. It's wonderful for the self-esteem of the volunteers with one young man developing the confidence to speak to others far more than he has done over the last couple of years. The shop next door is now open too and has given customers far more room and we can now stock larger items and can create a dedicated place for coffee, biscuits and chat.

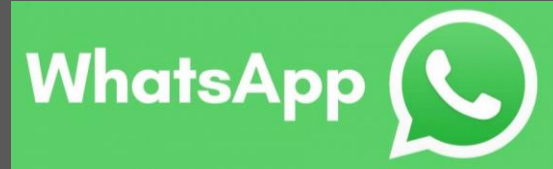
The shop is overwhelmed by the generosity of those people who donate goods to be resold. Everything they get is then steamed or cleaned and staff say that in every bag of donations they get there are always one or two real gems. Customers also enjoy the fact that if they are looking for something in particular, Bethel Treasures will put the word out and that item invariably turns up.

Word of mouth has meant that customers now come from further afield. One regular comes monthly from Cardigan in West Wales. She brings a list of things that her neighbours are looking for and says that she never goes away disappointed.

There is a shop Facebook page if you would like to keep updated on the shop – search for '[Bethel Treasures Heaven Scent](#)' to find and like it.

New volunteers are always welcomed, even if you can only spare an hour or two occasionally, or if you can do a couple of days a week. If you are interested, please see Mariann and she will get you sorted!

All in all, it's a little shop, with a big role - a place where you can make a real difference to people's lives.



# WhatsApp Groups

The Bethel Family WhatsApp group was the first of our groups to be set up and was started by Sarah Westwood at the very beginning of the first lockdown back at the end of March 2020. It started off small with just a few of the ladies from Bethel participating and even now it still numbers 54 ladies.

Some participate regularly and others just read what they can of the messages and only post occasionally, but it proved to be a vital support network for many during lockdown when we could not meet together and helped to draw everyone closer together and deepened our friendships and faith.

At the beginning, some days there were hundreds of messages, other days just a few, now we have a more manageable amount of messages each day, there are usually some birthdays or anniversaries to acknowledge, sometimes a worship song or poem, Bible verse or other reading is shared, and we always finish the day around 9pm with the Lord's Prayer on this and some of the other groups. It is a positive safe space in which to share, pray and to be with each other and with God.

Now we know how to do it, we also have a myriad of other WhatsApp groups going which are specific to particular groups or areas in church, such as Pathfinders, Icebreakers, Little Lambs, Little Acorns, Bethel Treasures, Team, Trustees, Flower Ladies, Christmas/Summer Fayre planners, Office, Cornerstone, Cancer Support Group, Pastoral Carers, etc., which keep everyone from those areas in contact and supporting each other.

If you would like to join any of the WhatsApp groups, please let us know and we can ask a Group Admin to add you.

# Finance



The church is the household of God and expenses need to be met. Just like the rest of us, church has experienced the squeeze of the cost of living crisis, with all of our outgoings increasing, seemingly weekly! We have a responsibility to look after church, those who work, volunteer and come here for any reason, so we need to take care of our finances conscientiously.

The running of the finances at Bethel have changed a little over the past 12 months. They are now looked after on a day-to-day basis by Jane, so paying invoices, keeping an eye on how much we have in the bank accounts, running a spreadsheet so that we can see all upcoming expenses and income to make sure we have enough money to get us through each month, or if we're going to overspend – a little bit scary at times!

Ann Holbeach does all the inputting onto the Sage accounts package each week, and does the banking for us, and makes sure everything is in order when we need to send our figures to our accountants each year.

For the year 2023 on the Current Account we had an overspend of just over £5000! However, because we started the year with over £8000 in the bank, we were thankfully still in credit by a couple of thousand.

God's people are asked to give a tithe of 10% of their earnings into God's storehouse. When this happens, God blesses us and our church – "you can't out-give God"! Bethel also tithes on all monies given or generated, so for all offerings and other income we get, we put 10% into a separate Tithe Account, which is then redistributed. In 2023, we tithed £13,144, however we gave out £17,165.58 to various individuals, families and organisations, so there seems to be some 'hilarious' giving going on, all the more for God's blessings to be received.





## SUNDAYS

Morning Worship 10.30am

incl. Pathfinders (under 14's)  
& Icebreakers (over 14's)

Evening Worship 6.00pm

## EACH WEEKDAY

Little Lambs  
Pre-School Centre



High quality 55 place private pre-school education within a happy, secure and stimulating early years environment for children aged 2½ to 5 years.

Further details and Prospectus available on our website

## MONDAYS

Knit & Natter

From the experienced to the novice, everyone welcome

Monday 9.30 - 11.30am



Breathe In, Breathe Out

Support group for people living with breathing difficulties of all kinds, e.g. COPD, Asthma, etc

Monday 1.00 - 3.00pm



## WEDNESDAYS

Cornerstone

Luncheon Club for Senior Citizens

Wednesday 12.30pm

Free local minibuss transport provided if needed

4 course meal  
£5.00



Please ring for availability on waiting list

## THURSDAYS

Little Acorns

Parents/Carers & Toddlers

Play and activities for toddlers and their carers

Thursday 9.30 - 11.15am

£3.00 per session  
(incl. refreshments)



## FRIDAYS



Feel Good Friday

Social get together for anyone who wants to have a cuppa, a chat and play cards, dominoes, etc.

Friday 2.00 - 4.00pm

Friday Night Icebreakers

For 11 - 18 year olds, get together at the end of the week, play music, games, cook, etc

Friday 7.00 - 9.00pm

## MONTHLY

One Way Club

For 5 - 10 year olds

Monthly on a Saturday, 10.00am - 1.00pm

Check website for dates - £2.00 per session



Games, Crafts & Activities

Cancer Peer Support Group

Last Tuesday of each month

5.30 - 7.00pm



Bethel also has a charity shop at

190-191 High Street,  
Quarry Bank, DY5 2AB

Lots of lovely pre-loved and new items for sale, and a very warm welcome awaits you at Bethel Treasures Heaven Scent

Bethel is also available for

Christenings, Weddings and Funerals

For further information please see our website or contact the church office.

